

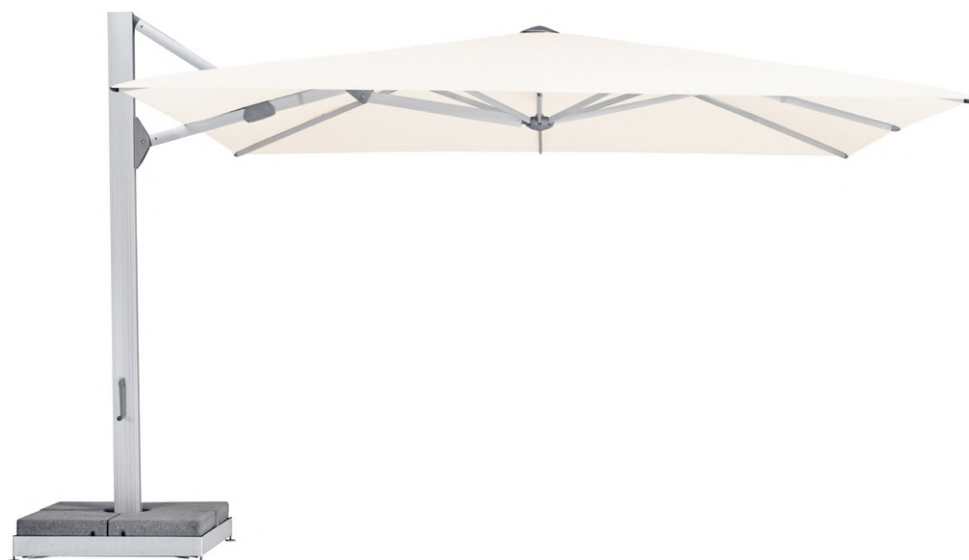
AMBIENTE Nova

The queen of the side-mast parasols



Glatz 

AMBIENTE Nova



Frame

8 parts

Profiled mast profile 85 × 145 mm

Crank drive for opening and closing, motor drive optionally available

Opposite opening principle for particularly high closing height

Synchronous opening principle

Optional 310° rotating adapter

Support arm and frame of the parasol roof made from anodised aluminium profiles

Canopy self-tensing through flexible rib ends

Frame roof: round, square, rectangular, custom build on request

Frame colour

Natural anodised aluminium, powder-coated anthracite matt

Available in any RAL colour for a surcharge

Canopy

Fabric quality 5: polyacrylic, 300 g/m², UV protection > 98 %

Flounce

Available with or without

Protective cover

Can be ordered as an optional extra

Options

Dimmable LED lighting, direct and indirect, integrated in ribs and on mast Motor drive



Using Locations



Fixations



AMBIENTE Nova,
Int. Patents reg. © Int. Design reg.



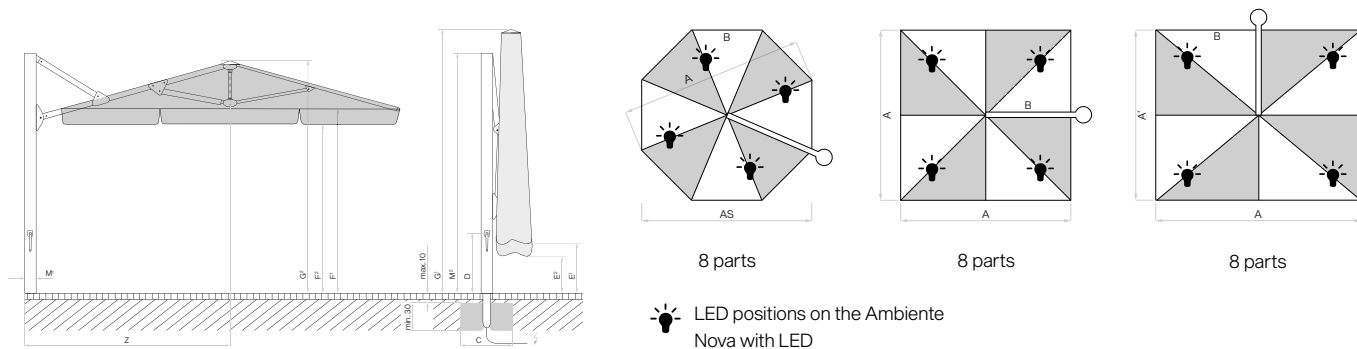
Swiss
Made

Assortment

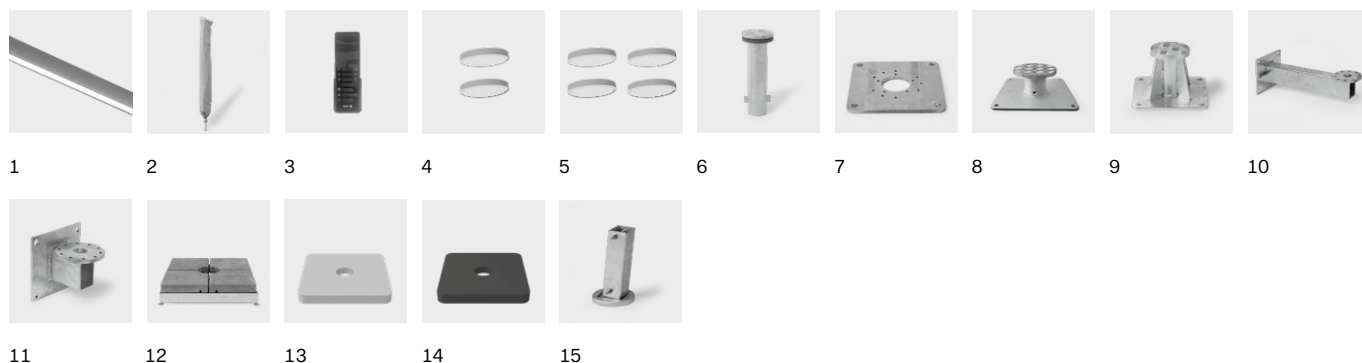
	Nominal size without flounce	Number of ribs	Order no. without flounce	Order no. with flounce
○	cm			
	Ø 400	8 parts	105 00 400 171	105 00 400 170
	Ø 500	8 parts	105 00 500 171	105 00 500 170
□	350×350	8 parts	105 00 351 171	105 00 351 170
	400×400	8 parts	105 00 401 171	105 00 401 170
⊥	400×300	8 parts	105 00 402 171	105 00 402 170
	450×350	8 parts	105 00 452 171	105 00 452 170

Nominal size	Lateral distance	Pole Ø	Area covered	Crank handle height	Height closed/with flounce	Lowest height when opening+ closing/with flounce	Clear height when headroom/ with flounce	Total height/ open	Height of pole	Length of free-arm	Foundation	Minimum weight for base	max. wind speed open perm.
cm	cm	cm	m ²	cm	cm	cm	cm	cm	cm	cm	cm	kg	km/h (wind force)
A	AS	M ¹	B	D	E ¹ /E ²		F ¹ /F ²	G ¹ /G ²	M ²	Z	C		
Ø 400	370	8.5×14.5	11.3	91	158/134	148/124	225/201	365/295	295	232	80×80	240	45 (6)
Ø 500	460	8.5×14.5	17.7	91	146/122	136/112	225/201	401/305	295	281	100×100	310	35 (6)
350×350	-	8.5×14.5	12.3	91	92/68	82/58	225/201	343/285	295	213	80×80	240	40 (6)
400×400	-	8.5×14.5	16	91	80/56	70/46	225/201	367/290	295	232	100×100	310	35 (6)
400×300	-	8.5×14.5	12	91	80/56	70/46	225/201	334/270	295	184	80×80	240	45 (6)
450×350	-	8.5×14.5	15.8	91	80/56	70/46	225/201	368/285	295	232	100×100	310	35 (6)

The listed measures represent extrapolated average values that may be slightly different on the product (± 2% ± 5 cm). If a minimum height underneath is required, this must be agreed with Glatz. The measures of the height are determined by the M4 ground socket. Depending on the base you choose, the listed measures change by the height of the corresponding base. The max. wind speed limits as per our separate sheet apply only if the parasol canopy is in a horizontal position and if there is a fix ground anchorage. In the presence of several parasols, the min. distance between one parasol and another and between parasols and walls shall be 25 cm.



Loose cover max. 10 cm, concrete thickness min. 30 cm (pay attention to frost depth), Guarantee water drainage, Supply line electric.



Options (Integrated into parasol. Cannot be retrofitted)		Absolutely necessary	Order no.
Ambiente Nova controls			
1	LED warm white, direct, indirect and on mast, dimmable, including Pz200 control	remote control	350 01 561 2XX
	Integral motor drive for Ambiente Nova, including Pz200 control	remote control	350 01 561 300
1	LED warm white and integral motor drive for Ambiente Nova, including Pz200 control	remote control	350 01 561 3XX
Accessories			
Protective cover made of coated, tear-resistant polyester fabric			
2	Protective cover with zip and rod, 345 × 80 cm		350 01 609 813
Electrical accessories			
3	Remote control incl. wall bracket, IP20, 7-channel, black, labelled		350 01 555 310
4	OSYRION Spot LED battery-powered light, set of 2, with remote control, including charger		350 01 563 000
5	OSYRION Spot LED battery-powered light, set of 4, with remote control, including charger		350 01 563 100
Fixations			
Ground sockets			
6	Ground socket M4, galvanised steel	Support tube M4	350 01 226 510
Mounting plates			
7	Mounting plate M4 / M8, 30 × 30 × 1.5 cm, galvanised steel	Support tube M4	350 01 226 921
8	Mounting plate M4 special, for installation height 50–149 mm, galvanised steel	Support tube M4	350 01 226 932
9	Mounting plate M4 special, for installation height 150–350 mm, galvanised steel	Support tube M4	350 01 226 930
	Mounting plate M4 for isolated grounds, installation height made to measure, high-grade steel 1.4301 / 304	Support tube M4	350 01 229 730
Wall consoles			
10	Wall console M4, extension 480 mm, galvanised steel	Support tube M4	350 01 229 405
11	Wall console M4, extension 100 mm, galvanised steel	Support tube M4	350 01 229 410
Bases			
12	Base frame M4 / M8 / M16, 240-690 kg, 105 × 105 × 12–16 cm, galvanised steel, adjustable and levellable (price without concrete elements)	Support tube M4	350 01 226 945
	Concrete element set, 4 × 48 kg, for 240 kg base, 48.3 × 48.3 × 9.4 cm, (approx. 192 kg), concrete		350 01 226 950
	Concrete element set, 4 × 65 kg, for 310 kg base, 48.3 × 48.3 × 12.6 cm, (approx. 260 kg), concrete		350 01 226 952
13	Cover for M4 / M8 / M16 base 240 kg, 110 × 110 × 12 cm, aluminium, powder coated light grey		350 01 227 417
14	Cover for M4 / M8 / M16 base 240 kg, 110 × 110 × 12 cm, aluminium, powder coated anthracite		350 01 227 430
13	Cover for M4 / M8 / M16 base 310 kg, 110 × 110 × 15 cm, aluminium, powder coated light grey		350 01 227 517
14	Cover for M4 / M8 / M16 base 310 kg, 110 × 110 × 15 cm, aluminium, powder coated anthracite		350 01 227 530
Support tubes/tip-over hinges			
15	Support tube M4 for Ambiente Nova		350 01 227 080
	Turnable adapter M4 for M4, turnable 310°	Support tube M4	350 01 227 090





Glatz AG
Parasols
2023 Season

glatz.com

