

# FORTERO®

The medium-size windproof favourite  
for cafés and restaurants



**Glatz** 

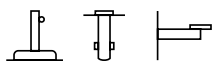
# FORTERO®



<b>Frame</b>	8 parts Two-part profiled mast 55 x 2.5 mm Opposite opening principle for easy opening Runner and crown made from robust die-cast aluminium Screws and rivets made from stainless steel Canopy self-tensing through flexible rib ends Frame roof: round, square, rectangular
<b>Frame colour</b>	Natural anodised aluminium
<b>Canopy</b>	Fabric quality 5: polyacrylic, 300 g/m <sup>2</sup> , UV protection > 98 % Fabric quality 4: polyester, 250 g/m <sup>2</sup> , UV protection > 98 % Fabric quality 2: polyester, 220 g/m <sup>2</sup> , UV protection > 98 %
<b>Flounce</b>	Only available without
<b>Protective cover</b>	Can be ordered as an optional extra
<b>Electrical accessories</b>	Osyron Spot LED with integrated battery pack



Using Locations



Fixations



FORTERO®,  
© Int. Design reg.



Swiss  
Design

# Assortment

	Nominal size without flounce	Number of ribs	Order no. Frame anodised natural
○	cm Ø 350	8 parts	320 00 350 171
□	250×250	8 parts	320 00 251 171
	300×300	8 parts	320 00 301 171
	350×350	8 parts	320 00 351 171
□	300×200	8 parts	320 00 302 171
	350×250	8 parts	320 00 352 171

Nominal size	Lateral distance	Mast Ø	Area covered	Height closed	Clear headroom	Total height	Height open	Foundation	Minimum weight for base	max. wind speed open perm.
cm	cm	cm	m <sup>2</sup>	cm	cm	cm	cm	cm	kg	km/h (wind force)
<b>A</b>	<b>AS</b>	<b>M</b>	<b>B</b>	<b>E</b>	<b>F</b>	<b>G</b>	<b>H</b>	<b>C</b>		
Ø 350	325	5.5	8.7	125	205	310	260	70×70	90	55 (7)
250×250	-	5.5	6.3	110	205	295	255	70×70	70	70 (8)
300×300	-	5.5	9.0	95	205	315	260	70×70	90	60 (7)
350×350	-	5.5	12.3	85	205	345	270	80×80	120	50 (7)
300×200	-	5.5	6.0	120	205	310	260	70×70	70	65 (8)
350×250	-	5.5	8.8	110	205	335	270	70×70	90	55 (7)

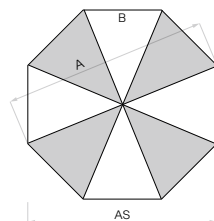
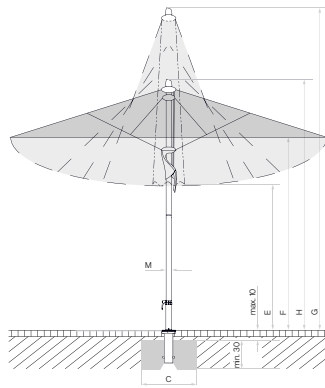
The listed measures represent extrapolated average values that may be slightly different on the product ( $\pm 2\% \pm 5$  cm).

Height dimensions are based on ground socket M4. If one of the offered bases is used, these measures raise by 11.5–15.5 cm.

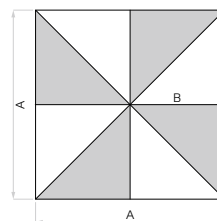
Using PX ground socket with connecting tube leaves an additional 10.5 cm.

The max. wind speed limits as per our separate list apply only in the presence of a fix ground anchorage.

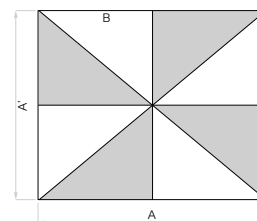
In the presence of several parasols, the minimum distance between one parasol and another and between parasols and walls shall be 20 cm.



8 parts



8 parts



8 parts

Loose cover max. 10 cm, concrete thickness  
min. 30 cm (pay attention to frost depth), Guarantee  
water drainage

## Accessories

**Absolutely  
necessary**

**Order no.**

### Protective cover made of coated, tear-resistant polyester fabric

1	Protective cover with zip and rod		350 01 609 981
---	-----------------------------------	--	----------------

### Electrical accessories

2	OSYRION Spot LED battery-powered light, set of 2, with remote control, including charger		350 01 563 000
3	OSYRION Spot LED battery-powered light, set of 4, with remote control, including charger		350 01 563 100

## Fixations

### Ground sockets

4	Ground socket PX, galvanised steel	Connection tube PX	350 01 207 001
4	Ground socket PX, high-grade steel 1.4301 / 304	Connection tube PX	350 01 207 011
5	Ground socket M4, galvanised steel	Support tube M4	350 01 226 510

### Mounting plates

6	Mounting plate M4 / M8, 30 × 30 × 1.5 cm, galvanised steel	Support tube M4	350 01 226 921
7	Mounting plate M4 special, for installation height 50–149 mm, galvanised steel	Support tube M4	350 01 226 932
8	Mounting plate M4 special, for installation height 150–350 mm, galvanised steel	Support tube M4	350 01 226 930
	Mounting plate M4 for isolated grounds, installation height made to measure, high-grade steel 1.4301 / 304	Support tube M4	350 01 229 730

### Wall consoles

9	Wall console M4, extension 480 mm, galvanised steel	Support tube M4	350 01 229 405
10	Wall console M4, extension 100 mm, galvanised steel	Support tube M4	350 01 229 410



1



2



3



4



5



6



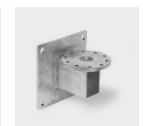
7



8



9



10

## Fixations

Absolutely  
necessary

Order no.

### Bases

11	Concrete base Z, 70 kg, Ø 75×9 cm	Support tube Z	350 01 109 527
11	Concrete base Z, 90 kg, Ø 75×11 cm	Support tube Z	350 01 109 523
	1 pallet (10 pieces) concrete base Z, 90 kg, Ø 75×11 cm	Support tube Z	350 01 109 535
12	Natural granite base Z, 90 kg, 64×64×9 cm, natural stone	Support tube Z	350 01 109 515
13	Steel base Z 40 kg, 58.5×58.5×2 cm, galvanised steel	Support tube Z	350 01 100 210
	Add-on weight 30 kg, 57.5×57.5×1.7 cm, galvanised steel		350 01 100 310
14	Base frame M4, 120 kg, (for 8 plates 40×40×4 cm), 91×91×11.5–15.5 cm, galvanised steel, adjustable and levellable (price without plates)	Support tube M4	350 01 108 235
	Slab set, 8 pieces, 40×40×4 cm, (approx. 110 kg), concrete		350 01 226 908
	Slab set, 8 pieces, 40×40×4 cm, (approx. 115 kg), 4 pieces concrete, 4 pieces in granite-look		350 01 226 909
15	Cover for M4 base 120 kg, 96×96×11.5 cm, plastic ABS coated, anodised aluminium look		350 01 100 617
16	Cover for M4 base 120 kg, 96×96×11.5 cm, plastic ABS coated, anthracite		350 01 100 630
	<sup>3,6</sup> Set of castors for base M4 120 kg/ 180 kg, (maximum weight 240 kg), Ø 5 cm, H = 5.5 cm, galvanised		350 01 100 500

### Bases with castors

17	<sup>3</sup> Base with castors Z, 90 kg, 80×80×11 cm, light concrete (without decorative plate) <b>NEW</b>	Support tube Z + Decorative plate	350 01 110 200
	Decorative plate in grey for base with castors Z, 90 kg, plastic <b>NEW</b>		350 01 110 310
	Decorative plate in anthracite for base with castors Z, 90 kg, plastic <b>NEW</b>		350 01 110 320
	Decorative plate in sand for base with castors Z, 90 kg, plastic <b>NEW</b>		350 01 110 330
	<sup>1,3</sup> Base with castors Z, 90 kg, 80×80×12.5 cm, cast concrete decor	Support tube Z	350 01 102 800
	<sup>1,3</sup> 1 pallet (5 pieces) base with castors Z, 90 kg, Ø 80×80×12.5 cm, cast concrete decor	Support tube Z	350 01 102 850
18	<sup>3</sup> Base frame with castors M4, 120 kg, 80×80×14.6 cm, galvanised steel, matt white, frame approx. 30 kg (without decorative plate) <b>NEW</b>	Weight Set + Support tube M4 + Decorative plate	350 01 110 410
18	<sup>3</sup> Base frame with castors M4, 120 kg, 80×80×14.6 cm, galvanised steel, anthracite, frame approx. 30 kg (without decorative plate) <b>NEW</b>	Weight Set + Support tube M4 + Decorative plate	350 01 110 420
	Weight Set for base with castors M4, 120 kg, 4 pieces, concrete, (Weight Set approx. 90 kg) <b>NEW</b>		350 01 110 500
	Decorative plate in grey for base with castors M4, 120 kg, plastic <b>NEW</b>		350 01 110 610
	Decorative plate in anthracite for base with castors M4, 120 kg, plastic <b>NEW</b>		350 01 110 620
	Decorative plate in sand for base with castors M4, 120 kg, plastic <b>NEW</b>		350 01 110 630
19	<sup>3</sup> Natural granite base M4, 120 kg, 90×90×17 cm, natural stone, with castors	Support tube M4	350 01 109 475
20	<sup>1,3</sup> Base frame with castors M4, 150 kg, 80×80×14 cm, galvanised steel	Support tube M4	350 01 103 000
	<sup>1</sup> Cast concrete decor weights set, 4 pieces 25101104500 (approx. 125 kg) for 350 01 103 000		350 01 103 100

### Support tubes/transition tubes

21	Support tube Z, Ø 48/55 mm, galvanised steel		350 01 201 210
21	Support tube Z, Ø 48/55 mm, high-grade steel 1.4301/304		350 01 201 300
22	Support tube M4, Ø 48/55 mm, galvanised steel		350 01 200 035
23	Connection tube PX, Ø 48/55 mm, galvanised steel		350 01 206 001
23	Connection tube PX, Ø 48/55 mm, high-grade steel 1.4301/304		350 01 206 011

<sup>1</sup> while stocks last

<sup>3</sup> only suitable for smooth, joint free surface coverings

<sup>6</sup> Not suitable for cover for M4 base



11 12 13 14 15 16 17 18 19 20



21 22 23



Glatz AG  
Parasols  
2023 Season

[glatz.com](https://www.glatz.com)

